

The Ark Encounter & Creation Museum

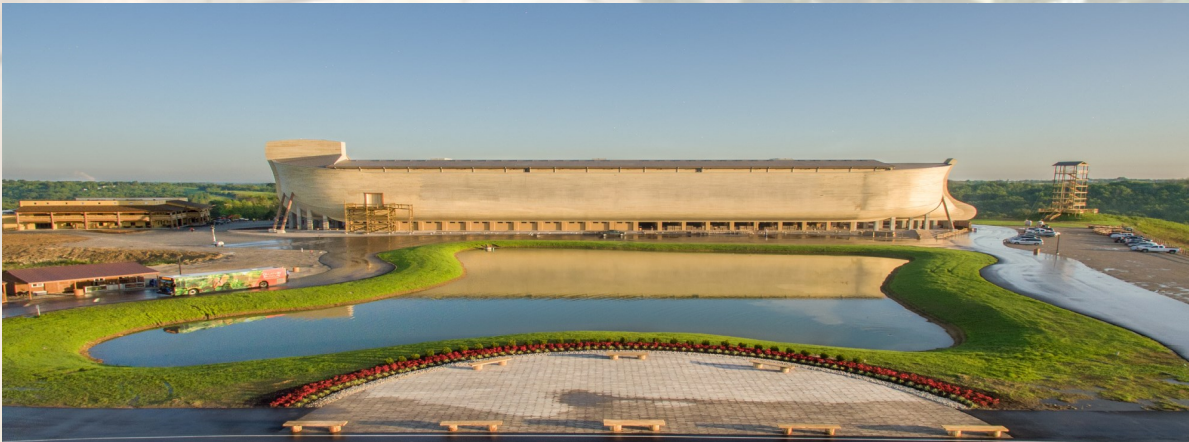
April 1 - April 5, 2024

\$1450 per person

5 Days, 4 Nights

Day 1 - George Rogers Clark National Historical Park

We start traveling east today. We will visit **George Rogers Clark National Historical Park**. Located on the banks of the Wabash River, it's believed to be the site of Fort Sackville. It is also the largest national monument outside of Washington, DC. We will spend tonight in **Evansville, IN**



Day 2 - Ark Encounter

Rise and shine, today is the day! Late morning, we'll arrive at the **Ark Encounter!** This is the full size replica of Noah's Ark. At 510 ft. long, 85 ft. wide and 51 ft. high, this modern marvel will amaze you! You'll be transported back in time to meet Noah and his seven other family members who lived aboard the Ark and cared for the animals during the flood. We'll spend tonight in **Dry Ridge, KY.**



Day 3 - Creation Museum

After breakfast, we depart for the **Creation Museum** in Petersburg, KY. Here we'll venture through biblical history, explore the beautiful botanical gardens and amazing exhibits. If there's time and you're feeling adventurous, there's even a zip line! We spend the night near **Petersburg, KY.**

Day 4 & 5 - Unique Horse Farm

We'll travel to Lexington, KY this morning and tour the **Unique Horse Farm**. Here you'll see the inner workings of the horse industry, including up close and personal with a Clydesdale. We'll have lunch on the way to the **Conrad-Caldwell House Museum**, one of the most stunning homes in Old Louisville. We'll spend tonight near **Evansville, IN**. On day 5, we arrive back in Missouri having lunch in St. Louis before getting on the shuttles to head home.